



Cabarrus County
EMPLOYEE HEALTH
C E N T E R

Cabarrus County Employee Health Center

Data reporting August 2006 to April 2009

Prepared by Johanna Ray, MPH, ACE
Health and Wellness Manager

Employee Health Center



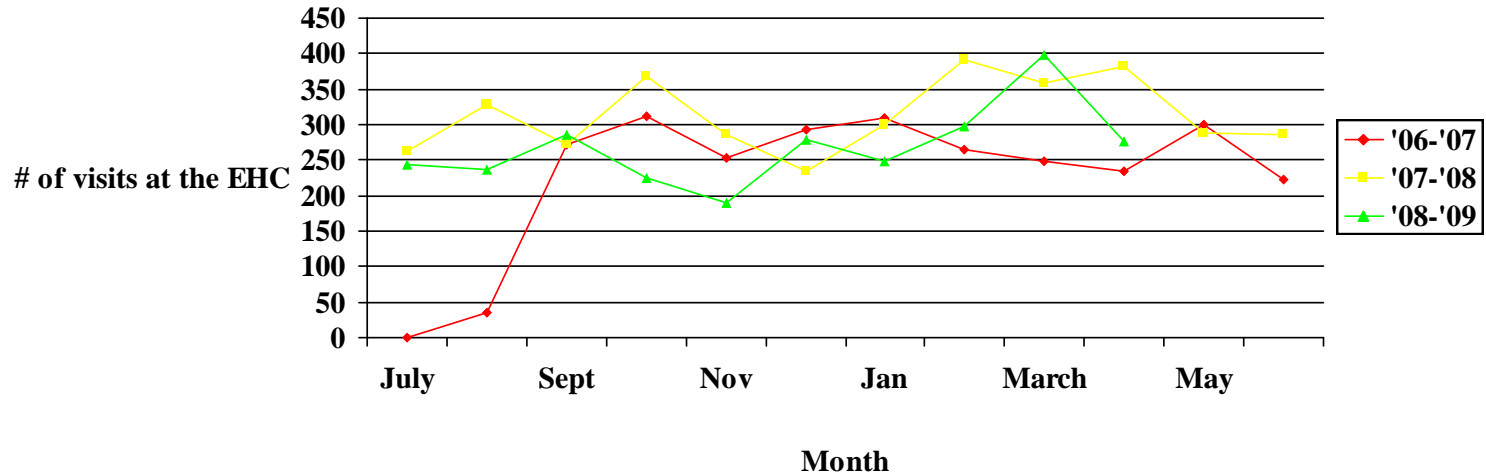
PURPOSE OF THE CENTER

- Slow down cost increase in health insurance
- No cost access point for medical care
- Lab savings
- Drug Testing
- New hire physicals
- Encourage wellness and preventative care

Employee Health Center



Utilization of the Employee Health Center

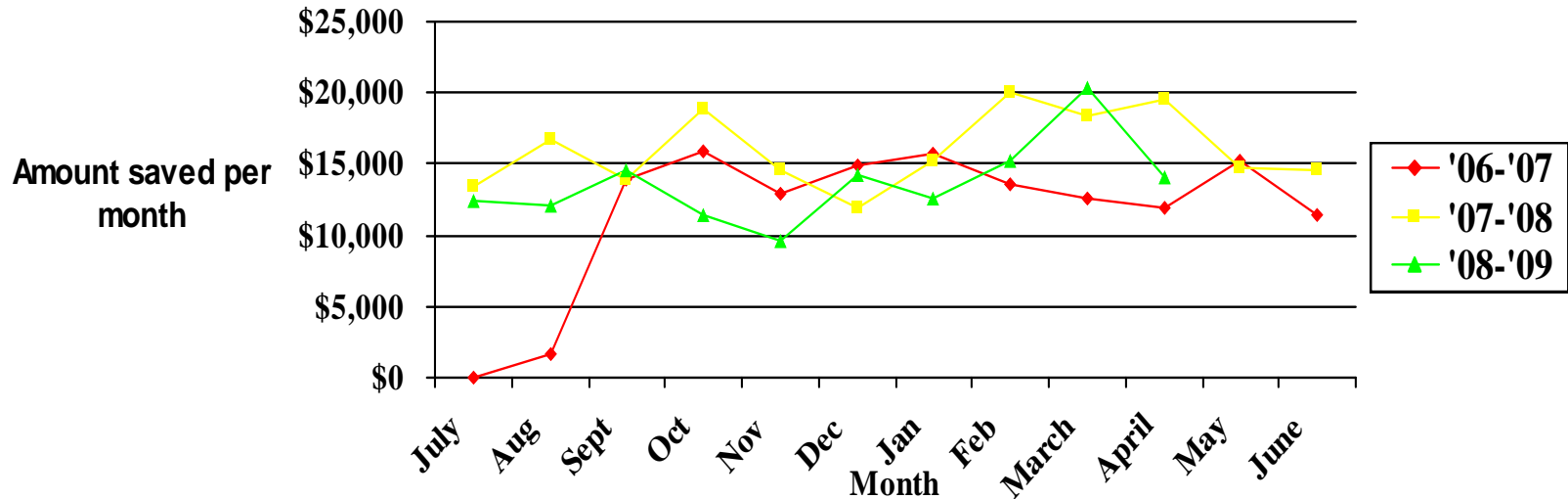


Total Office Visits at the Employee Health Center: 9,180

Employee Health Center



Estimate of cost savings from Physician Care Provider costs



Estimate of Physician Care Provider (PCP) costs saved to self funded plan: \$468,180.

Employee Health Center



LAB SERVICES

August 2006 to April 2009

- Cost of lab services by private provider \$472,381.70
- Cost of lab services by EHC \$103,363.35

Savings on lab services

\$369,018.35



Employee Health Center



PRESCRIPTION SAVINGS

August 2006 through February 2007*

- Savings related to dispensing of sample medications

\$10,791.86



*Due to the time involved to track the cost of each individual drug sample given to patients, we were unable to maintain tracking the cost savings.

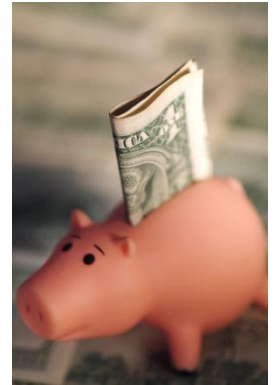
Employee Health Center



SAVINGS TO EMPLOYEES

August 2006 through April 2009

- Number of office visits = **9180**
- Savings for employees = **\$183,600**
- Average length of stay = **30-40 minutes**



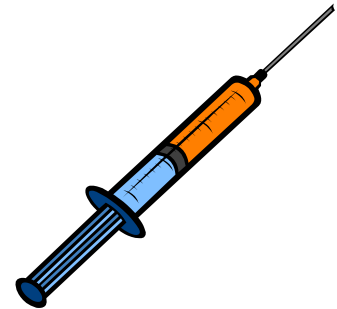
Employee Health Center



SAVINGS for Departments

August 2007 to April 2009

- Drug Testing = \$4,640
- Physicals = \$11,091
- Vaccines = \$11,837.70



Employee Health Center



- **Disease Management Programs**
 - Blood Pressure
 - Diabetes
 - Nutrition
 - Medication Education
 - Smoking Education
 - Asthma Education
- **Flu Shots**
- **Health Screenings**
- **Reward Days (Smoking Cessation, Blood Pressure, Integrated Medicine and Diabetes)**

Employee Health Center



Comments from Employees about the EHC

- “My PCP is too busy for a same day appointment, the EHC is convenient and quick with no cost.”
- “The NP was able to control my blood pressure”
- “The staff is super and they care about their patients.”
- “Impressed with efficiency, the easy way I could get in and out and the level of care.”
- “Relaxed atmosphere, personal touch and discussions.”
- “The EHC saved my life.”

Employee Health Center

- Challenges we overcame
 - Confidentiality
 - Music/form/front desk
 - Overuse/Sick leave excuse
 - EHC is not in place of PCP
 - Data Reporting
 - Handling complaints
 - Departmental Vaccines/physicals
- Upcoming Changes
 - Primary Care Physician and Pharmacy

Employee Health Center



August 2006 to April 2009

Expenditure	(\$624,587.44)
<u>Savings</u>	<u>\$1,059,158.27</u>
Saved	\$434,570.83

Employee Health Center



Period 1: 11/06-10/07

Period 2: 11/07-11/08

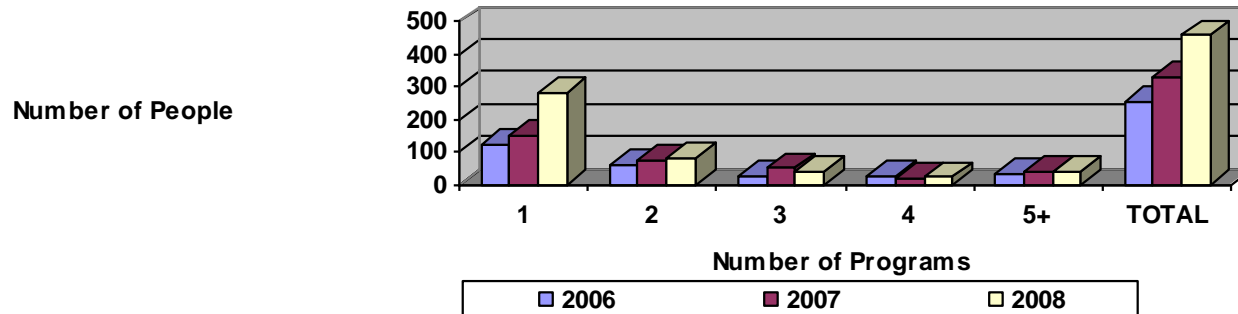
- ER/UC utilization of 297.0 visits per 1,000 members decreased 8% in Period 2.
- ER utilization decreased 5.1%, and the cost per visit was up. Members are using this setting for more severe conditions.
- Office visits per member increased from 3.26 to 3.47 per member. Cabarrus County is below the norm of 3.74 visits per member.

Wellness for Life



Wellness for Life program participation increased 22% from 2006 to 2007 and 28% from 2007 to 2008. Most of the increases have been due to opening the Fitness Rooms.

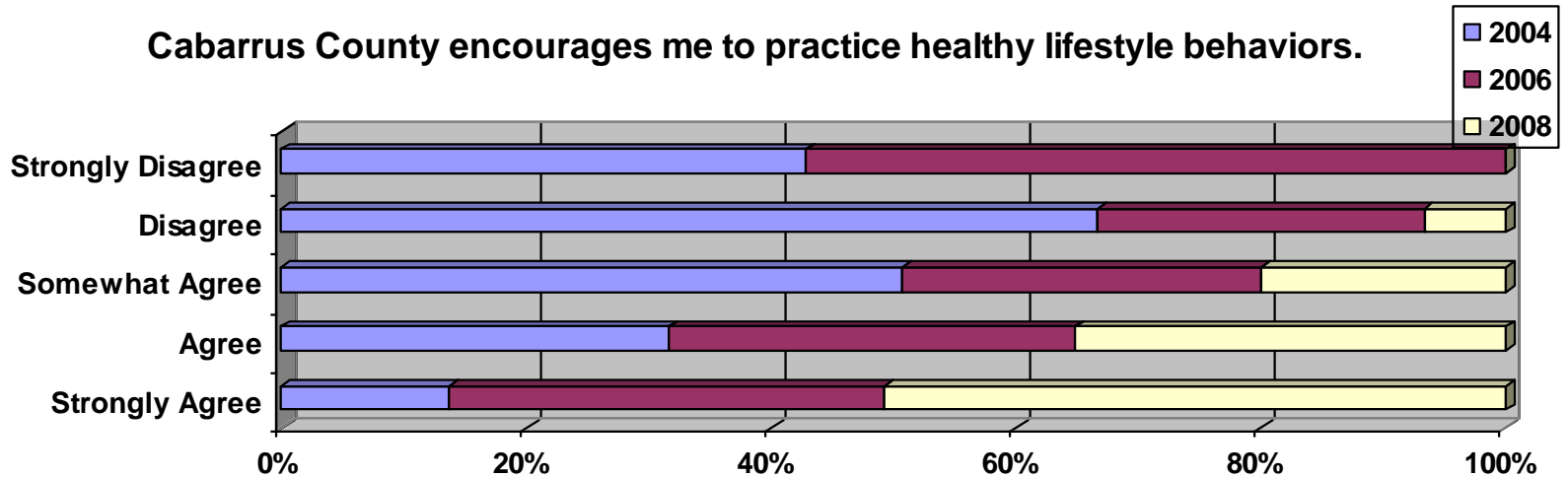
The number of programs people participated in 2006, 2007 and 2008



Wellness for Life



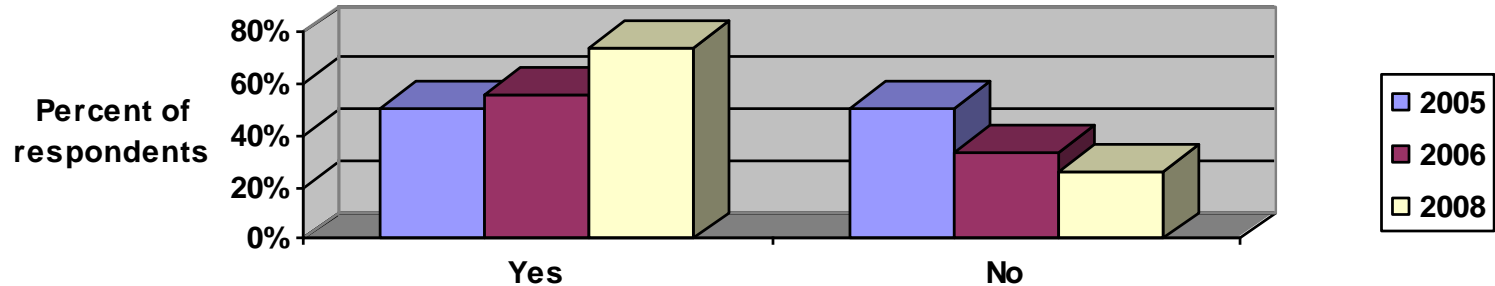
Cabarrus County encourages me to practice healthy lifestyle behaviors.



Wellness for Life



Have you ever participated in a Cabarrus County wellness program or event?



Health Insurance

- The cost trend for the **Cabarrus County Medical** plan has been as follows:
 - 2003 – 2004: -2%
 - 2004 – 2005: +1%
 - 2005 – 2006: +12%
 - 2006 – 2007: +4%
 - 2007 – 2008: +17%
 - 2008 – 2009: -.35%
- This is compared with **national trends** below for the same plan years:
 - 2003 – 2004: +16%
 - 2004 – 2005: +14%
 - 2005 – 2006: +13%
 - 2006 – 2007: +12%
 - 2007 – 2008: +17%
 - 2008 – 2009: +10%

